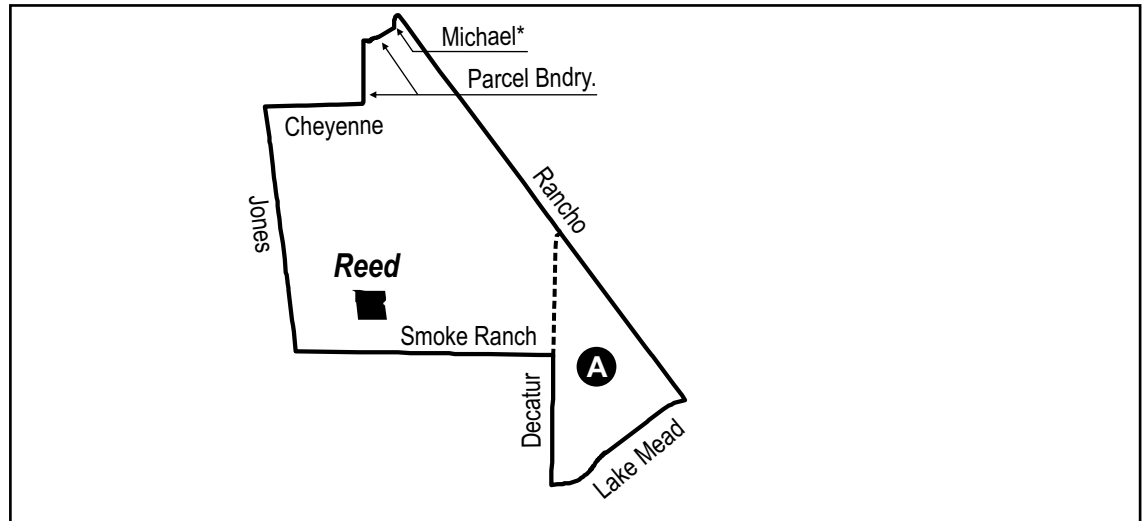


CLARK COUNTY SCHOOL DISTRICT BOARD OF TRUSTEES APPROVED CHANGES TO NORTHWEST ELEMENTARY SCHOOL ATTENDANCE BOUNDARIES FOR 2018-2019 SCHOOL YEAR



----- current boundary lines
 _____ approved boundary lines

* Both sides of the street will attend the school on the side of the street the name is printed.

Please note that as of June 2018 Ruth Fyfe Elementary School will no longer operate as a Clark County School District school. As a result of the school closure it is necessary to reassign their current students to Doris M. Reed and E. W. Griffith Elementary Schools beginning in the 2018-2019 school year.

Approved Zoning Changes

- A** From Ruth Fyfe Elementary School to Doris M. Reed Elementary School.
- B** From Ruth Fyfe Elementary School to E. W. Griffith Elementary School.
- C** From E. W. Griffith Elementary School to Vegas Verdes Elementary School.

