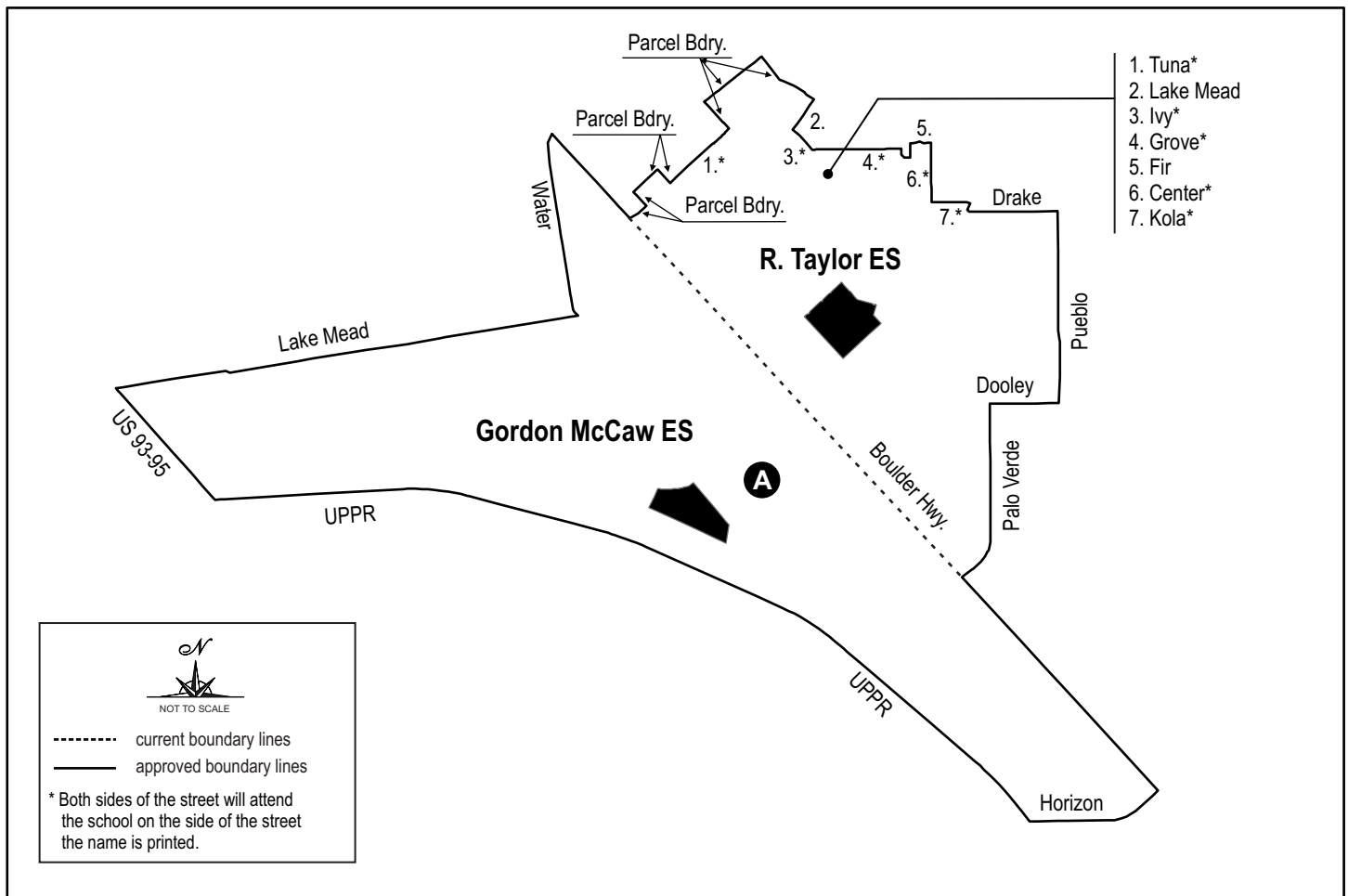


Clark County School District Board of Trustees Approved STAFF Changes to Elementary Schools Attendance Boundaries for 2020-2021 School Year



Approved Zoning Changes

- A** From Gordon McCaw Elementary School to Robert L. Taylor Elementary School.

In accordance with the Focus: 2024 goal to “Implement kindergarten classes at elementary magnet schools”, Demographics, Zoning and GIS Staff recommends aligning the kindergarten attendance boundaries with the existing 1st-5th grade boundaries. The kindergarten magnet lottery application process has already been implemented. This will merely memorialize the execution of this goal.

De acuerdo con el objetivo de Focus: 2024 para "Implementar clases de Kinder en las escuelas primarias magnet", el personal de Demografía, Zonificación y GIS recomienda alinear los límites de asistencia de Kinder con los límites existentes de primer a quinto grado. El proceso de solicitud de lotería de Kinder ya ha sido implementado. Esta simplemente conmemorará la ejecución de este objetivo.